

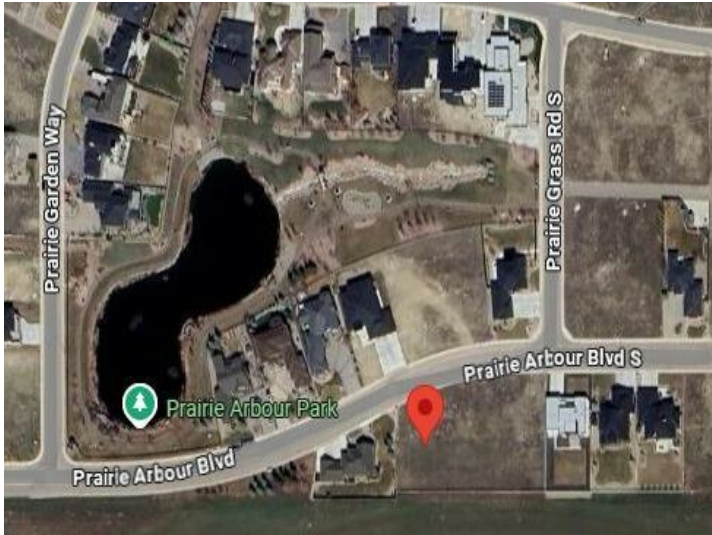


Anne French
Your REALTOR®
Love where you live.

403-894-9537
anne@locknkeyrealty.ca

90 Prairie Arbour Boulevard S
Lethbridge, Alberta

MLS # A2190273



\$269,000

Division: Arbour Ridge

Lot Size: 0.33 Acre

Lot Feat: Near Shopping Center, No Neighbours Behind, Street Lighting

By Town: -

LLD: -

Zoning: DC

Water: -

Sewer: -

Utilities: -

Welcome to Prairie Arbour Estates! This community is the premier destination for estate living in south Lethbridge and serves as the benchmark for upscale developments in southern Alberta. Prairie Arbour Estates boasts unrivaled views of Sixmile Coulee and easy access to walking trails and the spectacular Prairie Arbour Park. This 0.33 acre lot backs south onto undeveloped land, has all day sun in the backyard, and quick access across the street to the community park and playground. Comparative market value for a lot of this size and location makes this property a tremendously valuable investment.